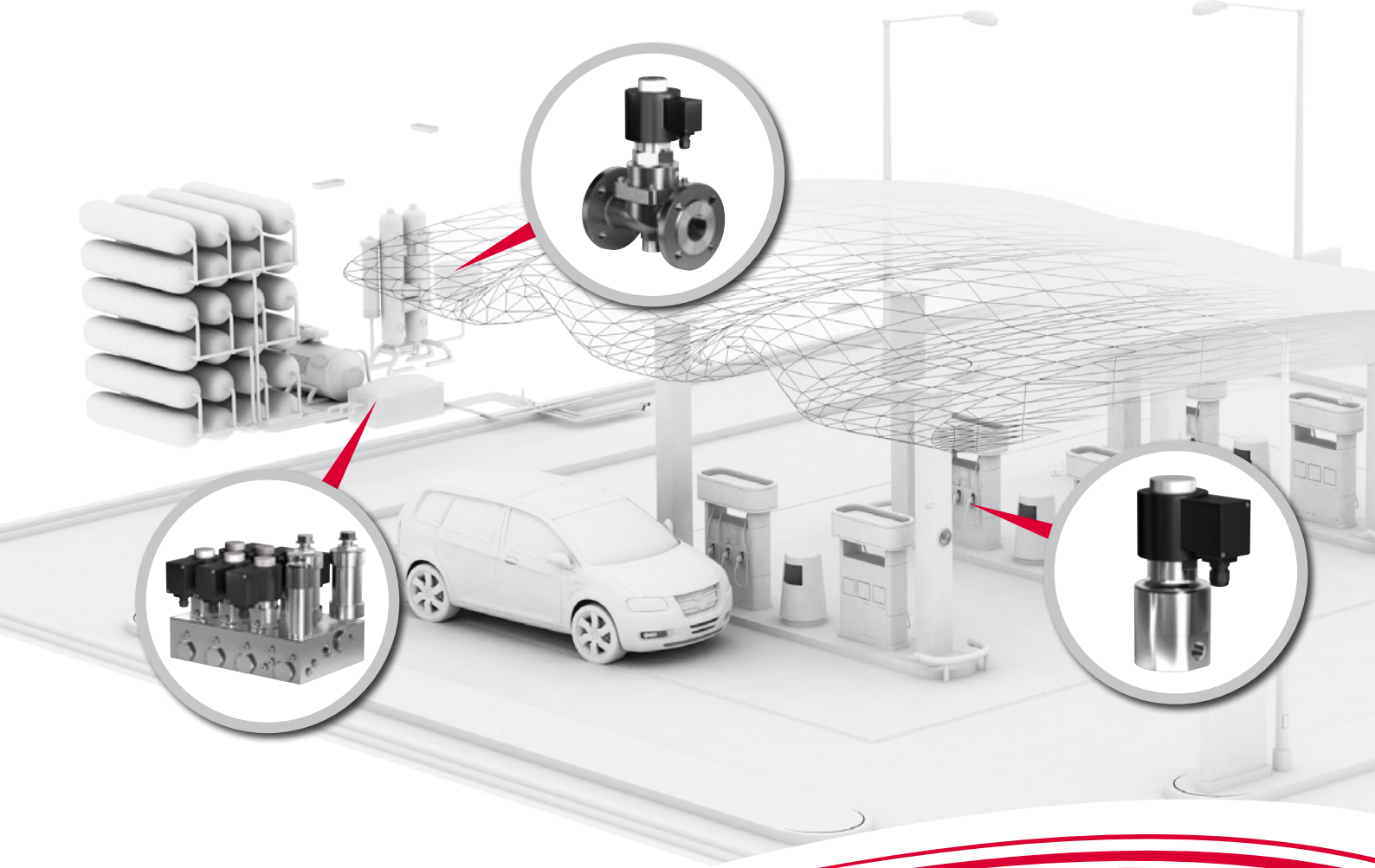




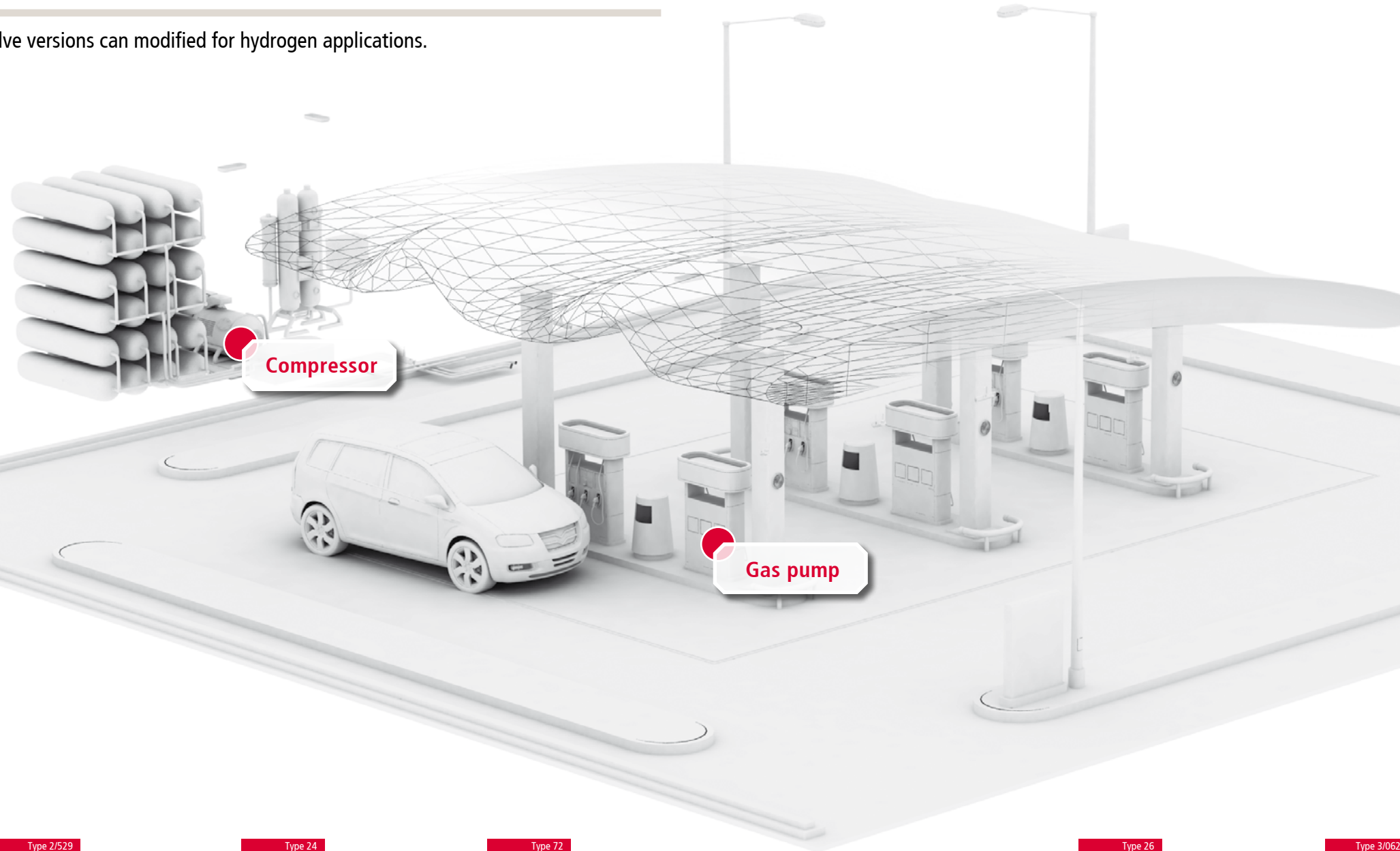
SPECIAL SOLUTIONS FOR  
CNG - APPLICATIONS



Innovative Valve Technology

# NATURAL GAS FILLING STATIONS

All presented valve versions can be modified for hydrogen applications.



Modular system for high-pressure valves: the right solution with the best cost-performance ratio

Alternatives to mineral oil can be found in gaseous form. Natural gas will remain available for much longer than petroleum. It combusts cleaner and is cheaper than mineral oil-based fuels.

As a result, the demand for natural gas filling stations will grow significantly. These filling and refueling systems must be operated at high pressure and under highest safety requirements.

Our valves have specifically been designed for natural gas filling stations, in a cartridge design for manifold valve blocks.

The service-friendly cartridge can easily be replaced. Due to the valve blocks, no extensive piping are necessary.

The non-return valves are by factory default integrated into the block, as well as the easy to replace filter unit in the pressure input. Our high pressure valves are available as single valves up to a pressure range of 450 bar, or as 3-fold or 6-fold solenoid valve block.

Due to our long-standing experience in the field of high pressure and CNG, we can provide you with all valves required for proper functioning of a natural gas filling station from our standard modular system and at high quality. The product range stretches from the pilot valve to trigger pneumatic valves to the gas supply valve. Dispenser Blocks and Priority Panels are also available out of the box, if required even as ATEX version.



Single valve up to 450 bar, also available as 6-fold or 3-fold valve block



Gas supply valve



Pilot valve for pneumatic drives

Applications include:

- Car tank systems and many applications in general mechanical and process engineering
- Ventilation of gas and tank systems
- Pneumatics



Pneumatically actuated single valve in the connection sizes 1/4"-2"



Solenoid actuated single valve in the connection sizes 1/4"-2"



Dispenser Block



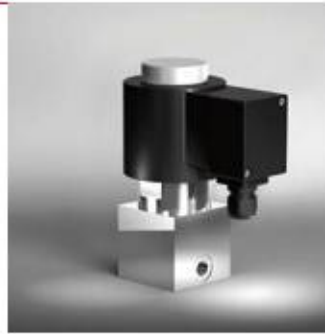
Priority Panel



# VALVES FROM 0-450 BAR

## Type 52

- 2/2-way direct acting solenoid valve
- Material: stainless steel, brass
- Pressure range: 0-90 bar
- Thread connection G $1/8$ -G $1/2$ , DN1-DN6



## Type 24

- 2/2-way force pilot operated piston solenoid valve
- Material: stainless steel, cast iron, cast steel
- Pressure range: 0-40 bar
- Flange connection PN16/40, DN15-DN300



## Type 72

- 3/2-way direct acting solenoid valve
- Material: stainless steel, brass
- Pressure range: 0-90 bar
- Thread connection G $1/8$ -G $1/2$ , DN1-DN6



## Type 2/529

- 2/2-way pilot operated piston solenoid valve
- Material: stainless steel
- Pressure range: 1-450 bar
- Thread connection G $1/8$ -G2, DN6-DN50



## 6-fold valve block

- 2/2-way pilot operated piston solenoid valve as 6-fold block
- Material: stainless steel, PEEK
- Pressure range: 2-350 bar
- Thread connection G $1/4$ -G $1/2$ , DN8
- Integrated non-return valves
- For CNG



## Type 3/062

- 2/2-way pilot operated piston solenoid valve
- Material: stainless steel, PEEK
- Pressure range: 5-350 bar
- Thread connection G $1/4$ -G $1/2$ , DN8



## 3-fold valve block

- 2/2-way pilot operated piston solenoid valve as 3-fold block
- Material: stainless steel, PEEK
- Pressure range: 1-350 bar
- Thread connection G $1/4$ -G $1/2$ , DN13
- Integrated filter unit
- Integrated non-return valves
- For CNG



## 6-fold valve block

- 2/2-way pilot operated piston solenoid valve as 6-fold block
- Material: stainless steel, PEEK
- Pressure range: 1-350 bar
- Thread connection G $1/4$ -G $1/2$ , DN13
- Integrated filter unit
- Integrated non-return valves
- For CNG

