

# HIGH TEMPERATURE SPECIAL

up to 400 °C



Innovative Valve Technology

## VALVES UP TO 400 °C

### Type 2/640

- 2/2-Way direct-pressure controlled valve
- Material: stainless steel 1.4581, brass 2.0402, GP 240 GH
- Pressure range: 0-40 bar
- Thread connection or flanged connection: G<sup>1</sup>/<sub>4</sub>-G2, DN15-DN100
- With spacer



### Applications:

- Hardening plants
- Blast-furnace constructions
- Coking plants
- Heavy oil
- Steam plants
- Water-steam turbines

## VALVES UP TO 350 °C

### Type 22DT

- 2/2-Way direct-pressure controlled valve
- Material: stainless steel 1.4581 or GP240 GH
- Pressure range: 0-40 bar
- Flanged connection: DN15-DN100
- With spacer



### Type 63DT

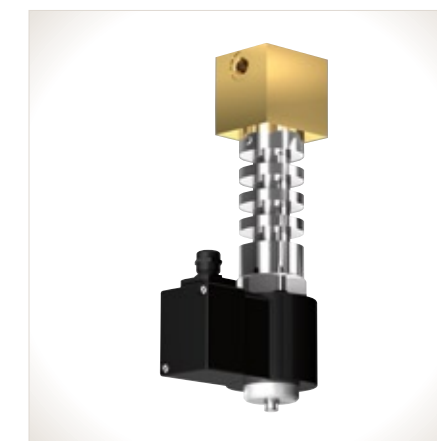
- 2/2-Way direct-pressure controlled valve
- Material: stainless steel 1.4408, red brass 2.1096 or brass 2.0402
- Pressure range: 0-40 bar
- Thread connection: G<sup>1</sup>/<sub>2</sub>-G2
- With spacer



## VALVES UP TO 300 °C

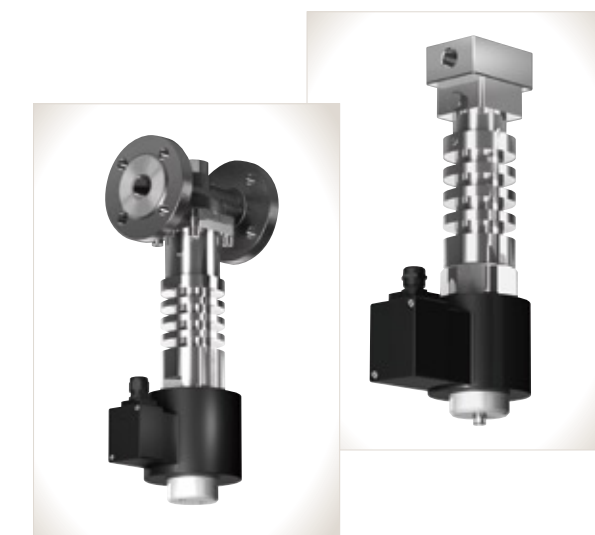
### Type 52DT

- 2/2-Way direct acting solenoid valve
- Material: stainless steel 1.4571, brass 2.0402
- Pressure range: 0-40 bar
- Thread connection: G<sup>1</sup>/<sub>8</sub>-G<sup>1</sup>/<sub>2</sub>
- With spacer
- Installation with hanging solenoid



### Type 2/164

- 2/2-Way force pilot operated piston solenoid valve
- Pressure range: 0-40 bar
- The valves can be delivered with flanged connection or with thread connection.
- Pressure stages PN40 GP240 GH or stainless steel 1.4581
- With spacer
- Installation with hanging solenoid



## VALVES UP TO 250 °C

### Type 24DT

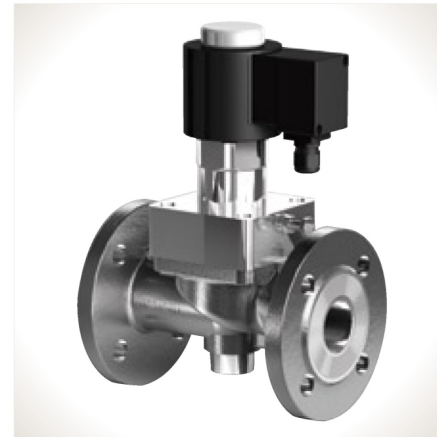
- 2/2-Way force pilot operated piston solenoid valve
- Material: stainless steel 1.4581 or GP240 GH, PN40 DIN2545, sealing face DIN2526 Type C
- Pressure range: 0-40 bar
- Flanged connection, PN40
- With spacer



# ■■ VALVES UP TO 200 °C

## Type 24TH

- 2/2-Way force pilot operated solenoid valve
- Pressure range: 0-40 bar
- Flanged connection, PN16 DIN2533, PN40 DIN2545
- Sealing face DIN2526 Type C



## Type 49TH

- 2/2-Way force pilot operated solenoid valve
- Material: stainless steel 1.4581 or brass 2.0402
- Pressure range: 0-40 bar
- Thread connection: G1/4-G3



GSR-MK-IM-HTBe-01-2011 / © GSR Ventilttechnik GmbH & Co. KG, Vlotho - Titelfotos: © Inzyx, Nes Jerry - Fotolia.com

# ■■ UP TO 70 °C AMBIENT TEMPERATURE

## Coil K0592710-KL

**ATEX Ex II 2G EEx emb II T4**  
**ATEX Ex II 2D IP65 T130°C**

- with cooling element
- Supply voltage: 24 V-230 V
- Power: max. 47 W
- Duty factor: 100% ED
- Connection: Terminal box
- Cable gland: M20 x 1,5
- Cable clamp range: 7-12 mm



1, Rue Marcelin Berthelot  
78270 Bonnières sur Seine  
Tél : 01.30.93.35.13  
Fax : 01.30.42.21.15  
<http://www.e2i-france.fr/>